

PEA SERIES

For elegance and style, the PEA Series complements the room environment with an aesthetically pleasing ceiling installation and a vast line-up of performance functions. Long pipe work installation is supported, increasing freedom in the placement of indoor units.

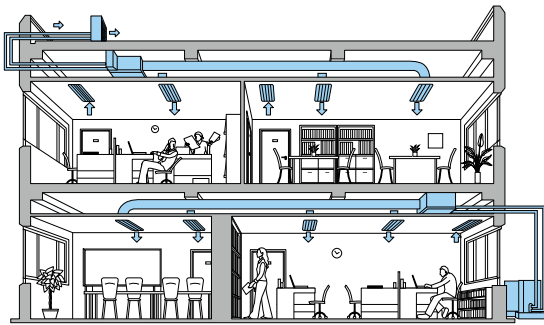


PEA-RP200/250WKA



Flexible Duct Design Enables Use of High-pressure Static Fan

A flexible duct design and 150Pa external static high-pressure are incorporated. The increased variation in airflow options ensures operation that best matches virtually all room layouts.



Long Refrigerant Piping Length

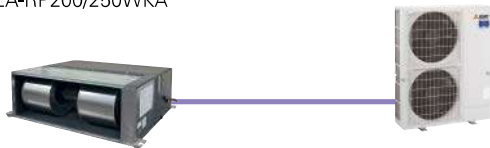
With the addition of more refrigerant, the maximum length for refrigerant piping has been increased to 100 metres. As a result, it is much easier to create the optimum layout for unit installation.

		Power Inverter Connection		Standard Inverter Connection	
		Max. Length	Max. Height	Max. Length	Max. Height
PEA-RP	200	100m	30m	70m	30m
	250	100m	30m	70m	30m

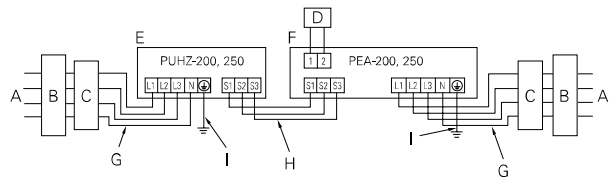
Wide-ranging Line-up from 20–25kW – Extensive Array of Choices to Match Building Size

[System Image]

PEA-RP200/250WKA



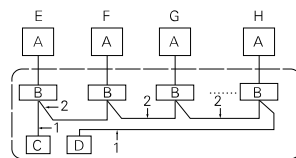
• For PEA-200, 250



PAR-40MAA Group Control

The PAR-40MAA remote controller can control up to 16 systems* as a group, and is ideal for supporting the integrated management of building air conditioners.

• For PEA-200, 250



- A Outdoor unit
- B Indoor unit
- C Main remote controller
- D Subordinate remote controller
- E Standard (Refrigerant address = 00)
- F Refrigerant address = 01
- G Refrigerant address = 02
- H Refrigerant address = 15

LINE-UP		
<p>Indoor Unit</p> <p>PEA-RP200/250WKA</p>	<p>Outdoor Unit</p> <p>Power Inverter Series</p> <p>PUHZ-ZRP200/250</p> <p>Standard Inverter Series</p> <p>PUHZ-P200/250</p>	<p>Remote Controller</p> <p>Optional</p> <p>Optional</p> <p>Optional</p>

PEA-RP SERIES

POWER INVERTER



Type				Inverter Heat Pump		
Indoor Unit				PEA-RP200WKA	PEA-RP250WKA	
Outdoor Unit				PUHZ-ZRP200YKA3	PUHZ-ZRP250YKA3	
Refrigerant				R410A*1		
Power Supply		Source		Outdoor power supply		
		Outdoor (V/Phase/Hz)		400 / Three / 50		
Cooling	Capacity	Rated	kW	19.0	22.0	
		Min - Max	kW	9.0 - 22.4	11.2 - 27.0	
	Total Input	Rated	kW	6.03	8.05	
	EER			3.15	2.73	
		EEL Rank				
				-		
Heating (Average Season)	Capacity	Rated	kW	22.4	27.0	
		Min - Max	kW	9.5 - 25.0	12.5 - 31.0	
	Total Input	Rated	kW	6.58	8.43	
	COP			3.40	3.20	
		EEL Rank				
				-		
Operating Current (max)				23.3	26.5	
Indoor Unit	Input [Cooling / Heating]	Rated	kW	0.66	0.80	
	Operating Current (max)		A	4.3	5.5	
	Dimensions		H x W x D	mm	470 - 1370 - 1120	
	Weight		kg	108		
	Air Volume [Lo-Hi]		m ³ /min	50 - 61 - 72		58 - 71 - 84
	External Static Pressure		Pa	(60) / (75) / (100) / 150		
	Sound Level (SPL) [Lo-Hi]		dB(A)	38 - 41 - 44		40 - 43 - 46
	Sound Level (PWL)		dB(A)	65 - 66 - 67		70 - 71 - 72
	Outdoor Unit	Dimensions		H x W x D	mm	
					1338 - 1050 - 330 (+40)	
Weight		kg	135	135		
Air Volume		Cooling	m ³ /min	140	140	
		Heating	m ³ /min	140	140	
Sound Level (SPL)		Cooling	dB(A)	59	59	
		Heating	dB(A)	62	62	
Sound Level (PWL)		Cooling	dB(A)	77	77	
		Operating Current (max)		A	19.0	21.0
Breaker Size		A	32	32		
Ext. Piping	Diameter	Liquid / Gas	mm	9.52 / 25.4		
	Max. Length	Out-In	m	100		
	Max. Height	Out-In	m	30		
Guaranteed Operating Range [Outdoor]	Cooling*2		°C	-15 ~ +46		
	Heating		°C	-20 ~ +21		

*1 Refrigerant leakage contributes to climate change. Refrigerant with lower global warming potential (GWP) would contribute less to global warming than a refrigerant with higher GWP, if leaked to the atmosphere. This appliance contains a refrigerant fluid with a GWP equal to 1975. This means that if 1 kg of this refrigerant fluid would be leaked to the atmosphere, the impact on global warming would be 1975 times higher than 1 kg of CO₂, over a period of 100 years. Never try to interfere with the refrigerant circuit yourself or disassemble the product yourself and always ask a professional.
The GWP of R410A is 2088 in the IPCC 4th Assessment Report.

*2 Optional air protection guide is required where ambient temperature is lower than -5°C.

PEA-RP SERIES

STANDARD INVERTER



Type				Inverter Heat Pump		
Indoor Unit				PEA-RP200WKA	PEA-RP250WKA	
Outdoor Unit				PUHZ-P200YKA3	PUHZ-P250YKA3	
Refrigerant				R410A*1		
Power Supply		Source		Outdoor power supply		
		Outdoor (V/Phase/Hz)		400 / Three / 50		
Cooling	Capacity	Rated	kW	19.0	22.0	
		Min - Max	kW	9.0 - 22.4	11.2 - 27.0	
	Total Input	Rated	kW	6.29	8.14	
	EER			3.02	2.70	
		EEL Rank				
				-		
Heating (Average Season)	Capacity	Rated	kW	22.4	27.0	
		Min - Max	kW	9.5 - 25.0	12.5 - 31.0	
	Total Input	Rated	kW	6.78	8.70	
	COP			3.30	3.10	
		EEL Rank				
				-		
Operating Current (max)				23.3	26.5	
Indoor Unit	Input [Cooling / Heating]	Rated	kW	0.66	0.80	
	Operating Current (max)		A	4.3	5.5	
	Dimensions		H x W x D	mm	470 - 1370 - 1120	
	Weight		kg	108		
	Air Volume [Lo-Hi]		m ³ /min	50 - 61 - 72		58 - 71 - 84
	External Static Pressure		Pa	(60) / (75) / (100) / 150		
	Sound Level (SPL) [Lo-Mid-Hi]		dB(A)	38 - 41 - 44		40 - 43 - 46
	Sound Level (PWL)		dB(A)	65 - 66 - 67		70 - 71 - 72
	Outdoor Unit	Dimensions		H x W x D	mm	
					1338 - 1050 - 330 (+40)	
Weight		kg	127	135		
Air Volume		Cooling	m ³ /min	140	140	
		Heating	m ³ /min	140	140	
Sound Level (SPL)		Cooling	dB(A)	58	59	
		Heating	dB(A)	60	62	
Sound Level (PWL)		Cooling	dB(A)	78	77	
		Operating Current (max)		A	19.0	21.0
Breaker Size		A	32	32		
Ext. Piping	Diameter	Liquid / Gas	mm	9.52 / 25.4		
	Max. Length	Out-In	m	70		
	Max. Height	Out-In	m	30		
Guaranteed Operating Range [Outdoor]	Cooling*2		°C	-15 ~ +46		
	Heating		°C	-20 ~ +21		

*1 Refrigerant leakage contributes to climate change. Refrigerant with lower global warming potential (GWP) would contribute less to global warming than a refrigerant with higher GWP, if leaked to the atmosphere. This appliance contains a refrigerant fluid with a GWP equal to 1975. This means that if 1 kg of this refrigerant fluid would be leaked to the atmosphere, the impact on global warming would be 1975 times higher than 1 kg of CO₂, over a period of 100 years. Never try to interfere with the refrigerant circuit yourself or disassemble the product yourself and always ask a professional.
The GWP of R410A is 2088 in the IPCC 4th Assessment Report.

*2 Optional air protection guide is required where ambient temperature is lower than -5°C.