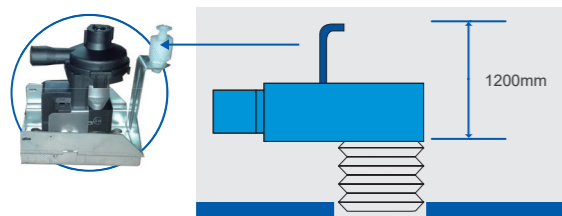


Mid ESP Duct



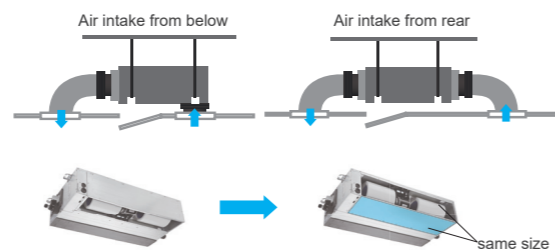
Built-In Drain Pump (Optional)

The built-in drain pump can lift condensing water up to 1200mm high from the drainage pan.



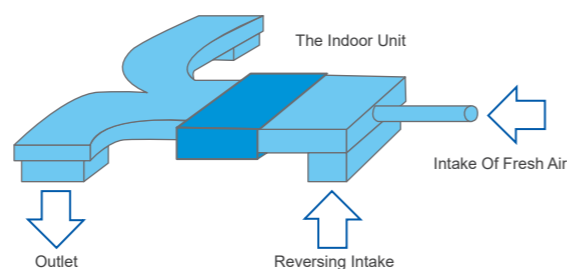
Flexible Installation

Air intake from rear as standard, from bottom is optional. The size of the plate from bottom is the same as the flange from back, which makes it convenient to change installation style due to different decoration requirements.



Fresh Air Intake

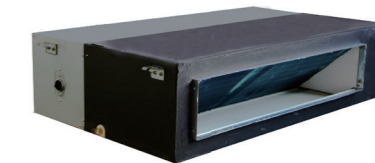
Fresh air makes indoor air healthy and comfortable.



FEATURES

- Auto Restart Function
- Hydrophilic Aluminum Fin
- Fast Cooling/Heating
- Low Ambient Cooling
- Intelligent Defrosting
- Long-term Filter
- Wired Control
- Remote Control
- Central Control
- Golden Fin
- WIFI Control

Mid ESP Duct



Specification-R410A 50Hz ON/OFF

Model	Indoor		ALLD-H12/4R1F-R	ALMD-H18/4R1F-R	ALMD-H24/4R1F-R	ALMD-H36/4R1F-R
	Outdoor		AL-H12/4R1F-R(U)	AL-H18/4R1F-R(U)	AL-H24/4R1F-R(U)	AL-H36/4R1F-R(U)
Capacity	Cooling/Heating	Btu/h	12000/12750	18000/19100	24000/26900	36000/39920
		kW	3.52/3.73	5.28/5.60	7.03/7.88	10.6/11.7
Electric Data	Power Supply	V~,Hz,Ph	220~240,50,1	220~240,50,1	220~240,50,1	220~240,50,1
		Cooling/Heating Power Input	kW	1.14/1.15	1.70/1.55	2.26/2.18
Performance	Cooling/Heating Current	A	5.49/5.63	7.80/7.11	10.37/10.00	17.30/16.60
		EER/COP	W/W	3.08/3.24	3.1/3.61	3.11/3.61
Performance	Air Flow Volume	m ³ /h	616/613/513/433/388	950/760/665	1400/1250/1050	2000/1600/1400
		Noise Level	dB(A)	39/37/33/29/26	38/35/32	46/44/42
Dimension (W×D×H)	ESP	Pa	20	80	80	80
		Net	mm	700×450×200	890×735×290	890×735×290
Weight	Packing	mm	1005×560×275	1070×800×360	1070×800×360	1070×800×360
		kg	18/21	32/37	33/38	35/39
Piping size	Drainage	mm(Inch)	DN20(R3/4)	DN20(R3/4)	DN20(R3/4)	DN20(R3/4)
Stuffing Quantity	20/40/40H	set	80/171/192	48/104/122	40/82/106	30/70/82

Specification-R410A 50Hz ON/OFF

Model	Indoor		ALMD-H36/5R1F-R	ALMD-H48/5R1F-R	ALMD-H60/5R1F-R
	Outdoor		AL-H36/5R1F-R(U)	AL-H48/5R1F-R(U)	AL-H60/5R1F-R(U)
Capacity	Cooling/Heating	Btu/h	36000/39920	48000/52000	60000/63500
		kW	10.6/11.7	14.07 /15.24	17.60 /18.50
Electric Data	Power Supply	V~,Hz,Ph	380~415,50,3	380~415,50,3	380~415,50,3
		Cooling/Heating Power Input	kW	3.73/3.50	4.90/5.05
Performance	Cooling/Heating Current	A	6.69/6.28	8.88/9.33	11.34/10.36
		EER/COP	W/W	2.84/3.34	2.87/3.02
Performance	Air Flow Volume	m ³ /h	2000/1600/1400	2400/2100/1700	2600/2300/1950
		Noise Level	dB(A)	50/47/41	49/46/44
Dimension (W×D×H)	ESP	Pa	80	80	80
		Net	mm	890×735×290	1250×735×290
Weight	Packing	mm	1070×800×360	1430×800×360	1430×800×390
		kg	35/39	45/51	50/56
Piping size	Drainage	mm(Inch)	DN20(R3/4)	DN20(R3/4)	DN20(R3/4)
Stuffing Quantity	20/40/40H	set	30/70/82	22/46/49	22/46/49

★ Remark: The above designs and specifications are subject to change without prior notice. Final specifications please refer to technical specification provided by sales representative.