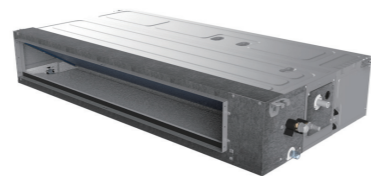


Duct



Specification-R32 50Hz DC Inverter



Model	Indoor		ALMD-H18/NDR3HA	ALMD-H24/NDR3HA	ALMD-H30/NDR3HA	ALMD-H36/NDR3HA	
	Outdoor		AL-H18/NDR3A(U)	AL-H24/NDR3A(U)	AL-H30/NDR3A(U)	AL-H36/NDR3A(U)	
Capacity	Cooling/Heating	Btu/h	18000(5220~19100)/19100(4800~21200)	24000(7400~28000)/27300(6800~31800)	28660(8490~31390)/30700(9760~32760)	36000(9800~44300)/38000(8800~46000)	
		kW	5.00(1.53~5.60)/5.60(1.40~6.20)	7.00(2.16~8.20)/8.00(1.98~9.30)	8.4(2.49~9.20)/9.0(2.86~9.60)	10.55(2.9~13)/11.15(2.6~13.5)	
Electric Data	Power Supply	V~,Hz,Ph	220~240,50,1	220~240,50,1	220~240,50,1	220~240,50,1	
		SEER/SCOP	W/W	6.1/4.0	6.1/4.0	6.1/4.0	6.1/4.0
Performance		ERP Energy Efficiency Class	A++/A+	A++/A+	A++/A+	A++/A+	
		Air Flow Volume	m³/h	1150/960/840	1400/1190/980	1600/1400/1100	1900/1600/1400
		Sound Pressure Noise Level	dB(A)	43/41/40	44/41/39	46/44/41	44/41/39
		Sound Power Noise Level	dB(A)	53	55	57	55
		ESP	Pa	0-160	0-160	0-160	0-160
		Dimension (WxDxH)	Net	mm	1000×750×245	1000×750×245	1000×750×245
Weight	Net/Gross	kg	1230×830×300	1230×830×300	1230×830×300	1630×830×300	
			31/37	32/38	32/38	42/48	
Piping size	Drainage	mm(inch)	DN20(R3/4)	DN20(R3/4)	DN20(R3/4)	DN20(R3/4)	
Applicable Area		m²	21-35	28-47	32-80	56-93	
Stuffing Quantity	20/40/40H	set	46/97/112	42/89/99	32/64/83	27/56/69	

Specification-R32 50Hz DC Inverter



Model	Indoor		ALMD-H42/NDR3HA	ALMD-H48/GDR3HA	ALMD-H60/GDR3HA	
	Outdoor		AL-H42/NDR3A(U)	AL-H48/GDR3A(U)	AL-H60/GDR3A(U)	
Capacity	Cooling/Heating	Btu/h	42000(9800~46000)/46000(8800~51100)	48000(14545~51845)/55000(12621~61500)	55000(16400~59000)/58000(16700~63100)	
		kW	12.1(2.9~13.5)/13.5(2.6~15)	14.0(4.26~15.20)/16.00(3.7~18.03)	16.00(4.80~17.30)/17.00(4.90~18.50)	
Electric Data	Power Supply	V~,Hz,Ph	220~240,50,1	380~415,50,3	380~415,50,3	
		SEER/SCOP	W/W	6.1/4.0	6.1/4.0	6.1/4.0
Performance		ERP Energy Efficiency Class	A++/A+	A++/A+	A++/A+	
		Air Flow Volume	m³/h	1900/1600/1400	2600/2210/1820	2600/2210/1820
		Sound Pressure Noise Level	dB(A)	44/41/39	52/49/47	52/49/47
		Sound Power Noise Level	dB(A)	55	69	69
		ESP	Pa	0-160	0-160	0-160
		Dimension (WxDxH)	Net	mm	1400×750×245	1250×735×320
Weight	Net/Gross	kg	1630×830×300	1430×800×390	1430×800×390	
			42/48	46/52	46/52	
Piping size	Drainage	mm(inch)	DN20(R3/4)	DN20(R3/4)	DN20(R3/4)	
Applicable Area		m²	56-93	64-107	64-107	
Stuffing Quantity	20/40/40H	set	27/56/69	18/46/51	18/46/51	

★ Remark: The above designs and specifications are subject to change without prior notice. Final specifications please refer to technical specification provided by sales representative.

Duct



Specification-R410A 50Hz DC Inverter

Model	Indoor		ALMD-H18/4DR1HA	ALMD-H24/4DR1HA	ALMD-H36/4DR1H	ALMD-H42/4DR1H	
	Outdoor		AL-H18/4DR1HA(U)	AL-H24/4DR1HA(U)	AL-H36/4DR1H(U)	AL-H42/4DR1H(U)	
Capacity	Cooling/Heating	Btu/h	18000(5220~19100)/19100(4800~21200)	24000(7400~28000)/27300(6800~31800)	36000(9800~40900)/42650(8900~45000)	41285(10900~45000)/46000(10200~50150)	
		kW	5.00(1.53~5.60)/5.60(1.40~6.20)	7.00(2.16~8.20)/8.00(1.98~9.30)	10.5(2.9~12.0)/12.5(2.6~13.2)	12.1(3.2~13.2)/13.5(3.0~14.7)	
Electric Data	Power Supply	V~,Hz,Ph	220~240,50,1	220~240,50,1	220~240,50,1	220~240,50,1	
		Cooling/Heating Power Input	kW	1.62(0.47~2.30)/1.47(0.46~2.25)	2.25(0.67~3.56)/1.91(0.65~3.62)	3.23(0.71~4.71)/3.5(0.47~4.13)	4.17(0.8~5.39)/3.89(0.58~4.90)
Performance		SEER/SCOP	W/W	6.1/4.0	6.1/4.0	6.1/4.0	6.1/4.0
		ERP Energy Efficiency Class	A++/A+	A++/A+	A++/A+	A++/A+	
		Air Flow Volume	m³/h	1150/960/840	1400/1190/980	2000/1700/1450	2000/1700/1450
		Sound Pressure Noise Level	dB(A)	42/40/37	46/42/38	51/48/45	51/48/45
		Sound Power Noise Level	dB(A)	52	56	62	62
		ESP	Pa	0-50	0-80	0-80	0-80
Dimension (WxDxH)	Net	mm	890×785×290	890×785×290	1250×785×290	1250×785×290	
			Packing	mm	1075×885×370	1075×885×370	1435×885×370
Weight	Net/Gross	kg	34/40	36/42	52/59	52/59	
			Piping size	Drainage	mm(inch)	DN20(R3/4)	DN20(R3/4)
Applicable Area		m²	21-35	28-47	56-93	64-107	
Stuffing Quantity	20/40/40H	set	43/95/112	36/78/95	21/45/49	21/45/49	

Specification-R410A 50Hz DC Inverter

Model	Indoor		ALMD-H48/5DR1H	ALMD-H60/5DR1H	ALMD-H36/4DR1HA	
	Outdoor		AL-H48/5DR1H(U)	AL-H60/5DR1H(U)	AL-H36/4DR1HA(U)	
Capacity	Cooling/Heating	Btu/h	48000(14000~54600)/55000(15700~59700)	55000(16400~59000)/60000(16700~63100)	36000(9800~41000)/38000(10000~45000)	
		kW	14.00(4.10~16.00)/16.00(4.60~17.50)	16.00(4.80~17.30)/17.00(4.90~18.50)	10.5(2.9~12.0)/11.14(2.93~13.19)	
Electric Data	Power Supply	V~,Hz,Ph	380~415,50,3	380~415,50,3	220~240,50,1	
		Cooling/Heating Power Input	kW	4.67(1.21~6.48)/4.57(0.92~5.66)	5.61(1.38~6.85)/4.96(0.98~6.00)	3.23(0.71~4.71)/3.5(0.47~4.13)
Performance		SEER/SCOP	W/W	6.1/4.0	6.1/4.0	6.1/4.0
		ERP Energy Efficiency Class	A++/A+	A++/A+	A++/A+	
		Air Flow Volume	m³/h	2260/2000/1650	2260/2000/1650	1900/1600/1400
		Sound Pressure Noise Level	dB(A)	52/49/46	52/49/46	44/41/39
		Sound Power Noise Level	dB(A)	62	62	62
		ESP	Pa	0-80	0-80	0-160
Dimension (WxDxH)	Net	mm	1250×785×290	1250×785×290	1400×700×245	
			Packing	mm	1435×885×370	1435×885×370
Weight	Net/Gross	kg	52/59	52/59	41.5/48	
			Piping size	Drainage	mm(inch)	DN20(R3/4)
Applicable Area		m²	64-107	64-107	56-93	
Stuffing Quantity	20/40/40H	set	21/45/49	21/45/49	27/56/69	

★ Remark: The above designs and specifications are subject to change without prior notice. Final specifications please refer to technical specification provided by sales representative.