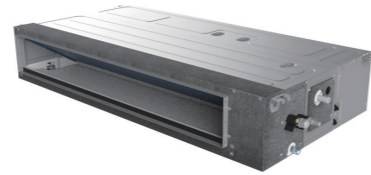


Duct



Specification-R410A 50Hz DC Inverter

Model	Indoor		ALMD-H18/4DR1C	ALMD-H24/4DR1C	ALMD-H36/4DR1HA
	Outdoor		AL-H18/4DR1C	AL-H24/4DR1HC	AL-H36/4DR1HA(U)
Capacity	Cooling/Heating	Btu/h	18000(5220-19107)/19100(4777-21154)	24000(7370-27978)/27000(6756-31732)	36000(11942-44300)/38000(8530-46000)
		kW	5.0(1.53-5.6)/5.6(1.4-6.2)	7.0(2.16-8.2)/8.0(1.98-9.3)	10.55(3.5-13)/11.15(2.5-13.5)
Electric Data	Power Supply	V~,Hz,Ph	220-240,50,1	220-240,50,1	220-240,50,1
		Cooling/Heating Power Input	kW	1.62(0.47~2.30)/1.47(0.46~2.25)	2.25(0.67~3.56)/1.91(0.65~3.62)
Performance	SEER/SCOP	W/W	6.1/4.0	6.1/4.0	6.1/4.0
	ERP Energy Efficiency Class		A++/A+	A++/A+	A++/A+
	Air Flow Volume	m ³ /h	1000/800/680	1300/1090/880	1900/1600/1400
	Sound Pressure Noise Level	dB(A)	43/41/40	44/41/39	44/41/39
	Sound Power Noise Level	dB(A)	53	55	55
Dimension (WxDxH)	Net	mm	1000x700x245	1000x700x245	1400x700x245
		Packing	mm	1230x830x300	1230x830x300
Weight	Net/Gross	kg	31/37	32/38	42/48
Piping size	Drainage	mm(inch)	DN20(R3/4)	DN20(R3/4)	DN20(R3/4)
Applicable Area		m ²	21-35	28-47	56-93
Stuffing Quantity	20/40/40H	set	46/97/112	42/89/99	27/56/69

Specification-R410A 50Hz DC Inverter

Model	Indoor		ALMD-H48/5DR1C	ALMD-H60/5DR1C
	Outdoor		AL-H48/5DR1C	AL-H60/5DR1C
Capacity	Cooling/Heating	Btu/h	48000(14330-51589)/52000(15695-59710)	55000(7370-27978)/63500(6756-31732)
		kW	14.06(4.2-15.12)/15.24(4.6-17.50)	16.12(4.8-17.30)/18.61(4.9-19.80)
Electric Data	Power Supply	V~,Hz,Ph	380-415,50,3	380-415,50,3
		Cooling/Heating Power Input	kW	5.02(1.29~7.5)/5.01(1.26~7.0)
Performance	SEER/SCOP	W/W	6.1/4.0	6.1/4.0
	ERP Energy Efficiency Class		A++/A+	A++/A+
	Air Flow Volume	m ³ /h	1900/1600/1400	2030/1880/1670
	Sound Pressure Noise Level	dB(A)	53/50/44	53/50/44
	Sound Power Noise Level	dB(A)	65	67
Dimension (WxDxH)	Net	mm	1400X700X245	1400X700X245
		Packing	mm	1630X830X300
Weight	Net/Gross	kg	47/54	47/54
Piping size	Drainage	mm(inch)	DN20(R3/4)	DN20(R3/4)
Applicable Area		m ²	56-93	64-107
Stuffing Quantity	20/40/40H	set	46/97/112	42/89/99

★ Remark: The above designs and specifications are subject to change without prior notice. Final specifications please refer to technical specification provided by sales representative.



Inverter Series Free Match