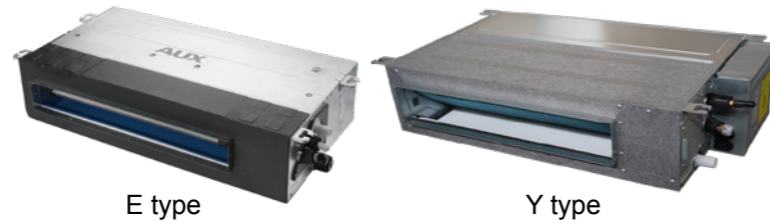


# Slim Duct



## Specification E type - 50/60Hz DC fan motor

Model	Indoor		ARVSD-H022/R1X	ARVSD-H028/R1X	ARVSD-H036/R1X	ARVSD-H045/R1X	ARVSD-H056/R1X	ARVSD-H071/R1X
Capacity	Cooling	kW	2.2	2.8	3.6	4.5	5.6	7.1
	Heating	kW	2.5	3.0	4.3	5.0	6.0	8.0
Electric Data	Power Supply	V~, Hz, Ph	220~240, 50/60, 1	220~240, 50/60, 1	220~240, 50/60, 1	220~240, 50/60, 1	220~240, 50/60, 1	220~240, 50/60, 1
	Rated Power	W	57	57	61	80	80	90
Performance	Air Flow Volume(Hi/Mid/Low)	m <sup>3</sup> /h	480/390/320	480/390/320	560/430/390	850/680/575	850/680/575	1000/810/685
	Noise Level(Hi/Mid/Low)	dB(A)	30/26/23	30/26/23	32/28/25	38/35/32	38/35/32	39/36/32
	External Static Pressure(ESP)	Pa	10/30	10/30	10/30	10/30	10/30	10/30
Dimension (WxDxH)	Net	mm	840×460×185	840×460×185	840×460×185	1160×460×185	1160×460×185	1160×460×185
	Packing	mm	1030×545×250	1030×545×250	1030×545×250	1350×545×250	1350×545×250	1350×545×250
Weight		kg	15.5/19	15.5/19	16.5/20	20/24	20/24	22/26
Pipe Diameter	Liquid Side	mm(inch)	6.35(1/4)	6.35(1/4)	6.35(1/4)	6.35(1/4)	6.35(1/4)	9.52(3/8)
	Gas Side	mm(inch)	9.52(3/8)	9.52(3/8)	12.7(1/2)	12.7(1/2)	12.7(1/2)	15.88(5/8)
	Drainage	mm(inch)	DN20(R3/4)	DN20(R3/4)	DN20(R3/4)	DN20(R3/4)	DN20(R3/4)	DN20(R3/4)
Stuffing Quantity	20/40/40H	unit	198/414/460	198/414/460	198/414/460	153/306/340	153/306/340	153/306/340

## Specification E type -50Hz AC fan motor

Model	Indoor		ARVSD-H022/4R1A	ARVSD-H028/4R1A	ARVSD-H036/4R1A	ARVSD-H045/4R1A	ARVSD-H056/4R1A	ARVSD-H071/4R1A
Capacity	Cooling	kW	2.2	2.8	3.6	4.5	5.6	7.1
	Heating	kW	2.5	3.0	4.3	5.0	6.0	8.0
Electric Data	Power Supply	V~, Hz, Ph	220~240, 50, 1	220~240, 50, 1	220~240, 50, 1	220~240, 50, 1	220~240, 50, 1	220~240, 50, 1
	Rated Power	W	59	59	65	91	91	113
Performance	Air Flow Volume(Hi/Mid/Low)	m <sup>3</sup> /h	480/390/320	480/390/320	560/430/390	850/680/575	850/680/575	1000/810/685
	Noise Level(Hi/Mid/Low)	dB(A)	30/26/23	30/26/23	32/28/25	38/35/32	38/35/32	39/36/32
	External Static Pressure(ESP)	Pa	10/30	10/30	10/30	10/30	10/30	10/30
Dimension (WxDxH)	Net	mm	840×460×185	840×460×185	840×460×185	1160×460×185	1160×460×185	1160×460×185
	Packing	mm	1030×545×250	1030×545×250	1030×545×250	1350×545×250	1350×545×250	1350×545×250
Weight		kg	15.5/19	15.5/19	16.5/20	20/24	20/24	22/26
Pipe Diameter	Liquid Side	mm(inch)	6.35(1/4)	6.35(1/4)	6.35(1/4)	6.35(1/4)	6.35(1/4)	9.52(3/8)
	Gas Side	mm(inch)	9.52(3/8)	9.52(3/8)	12.7(1/2)	12.7(1/2)	12.7(1/2)	15.88(5/8)
	Drainage	mm(inch)	DN20(R3/4)	DN20(R3/4)	DN20(R3/4)	DN20(R3/4)	DN20(R3/4)	DN20(R3/4)
Stuffing Quantity	20/40/40H	unit	198/414/460	198/414/460	198/414/460	153/306/340	153/306/340	153/306/340

## Specification Y Type -50HZ AC fan motor

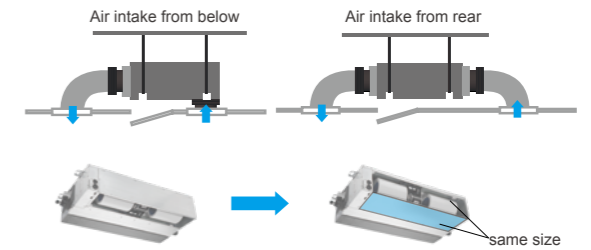
Model	Indoor		ARVLD-H22/4R1Y	ARVLD-H28/4R1Y	ARVLD-H36/4R1Y	ARVLD-H45/4R1Y	ARVLD-H56/4R1Y	ARVLD-H71/4R1Y
Capacity	Cooling	kW	2.2	2.8	3.6	4.5	5.6	7.1
	Heating	kW	2.6	3.2	4	5	6.3	8
Electric Data	Power Supply	V~, Hz, Ph	220~240, 50, 1	220~240, 50, 1	220~240, 50, 1	220~240, 50, 1	220~240, 50, 1	220~240, 50, 1
	Rated Power	W	25	25	25	35	35	45
Performance	Air Flow Volume(Hi/Mid/Low)	m <sup>3</sup> /h	550/450/380/320	550/450/380/320	600/490/410/350	900/710/620/490	900/710/620/490	1150/900/700/590
	Noise Level(Hi/Mid/Low)	dB(A)	31/27/25	31/27/25	33/30/27	34/30/28	34/30/28	34/31/30
	External Static Pressure(ESP)	Pa	10/30	10/30	10/30	10/30	10/30	10/30
Dimension (WxDxH)	Net	mm	700×470×200	700×470×200	700×470×200	1000×470×200	1000×470×200	1300×470×200
	Packing	mm	1005×580×275	1005×580×275	1005×580×275	1305×580×275	1305×580×275	1610×580×275
Weight		kg	18.5/22	18.5/22	19/23	24.5/29	24.5/29	30/35
Pipe Diameter	Liquid Side	mm(inch)	6.35(1/4)	6.35(1/4)	6.35(1/4)	6.35(1/4)	6.35(1/4)	9.52(3/8)
	Gas Side	mm(inch)	9.52(3/8)	9.52(3/8)	12.7(1/2)	12.7(1/2)	12.7(1/2)	15.88(5/8)
	Drainage	mm(inch)	R3/4in(DN20)	R3/4in(DN20)	R3/4in(DN20)	R3/4in(DN20)	R3/4in(DN20)	R3/4in(DN20)
Stuffing Quantity	20/40/40H	unit	176/368/414	176/368/414	176/368/414	136/288/324	136/288/324	104/232/261

Notes:  
 1. Cooling Capacity: Indoor temperature 27°C DB/19°C WB; Outdoor temperature: 35°C DB/24°C WB.  
 2. Heating Capacity: Indoor temperature 20°C DB; Outdoor temperature: 7°C DB/6°C WB.  
 3. Piping Length: Equivalent piping length: 7.5m, level difference: 0m.  
 4. Sound level is measured at 1.4m below the unit.  
 5. The above designs and specifications are subject to change without prior notice. Final specifications please refer to technical specification provided by sales representative.

# Mid ESP Duct

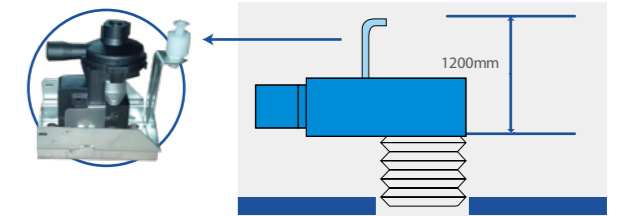
## Flexible Air Intake Options

Air intake from rear as standard, from bottom is optional. The size of the plate from bottom is the same as the flange from back, which makes it convenient to change installation style according to different decoration requirements.



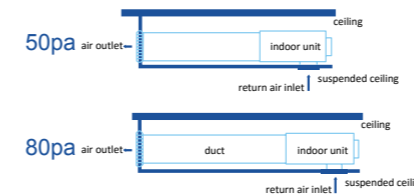
## Built-in Water Pump (Optional)

The built-in pump can lift condensing water up to 1200mm high from the drainage pan.



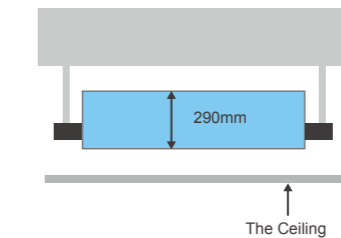
## Optional ESP

50Pa and 80Pa are both optional.



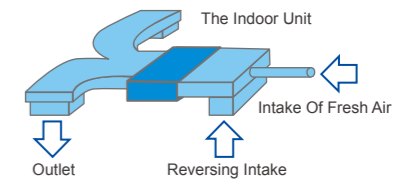
## Ultra Slim Design

Only 290mm in height, save installation space.



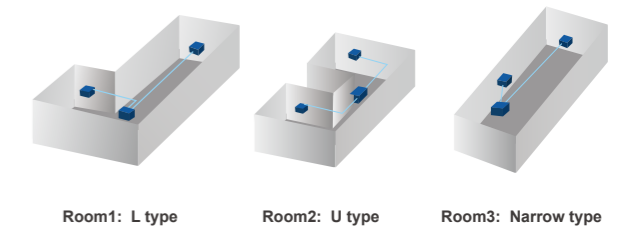
## Fresh Air Intake

Fresh air makes indoor air healthy and comfortable.



## Applicable To A Variety Of Room Types

Specific ESP design can be applied to various room types easily, like rooms of L type or U type; the air outlet can be set separately from the indoor unit, so the air flow can be equally distributed even the room is in irregular structure.



## Fan Motor Options

Choose either AC or DC fan motors.