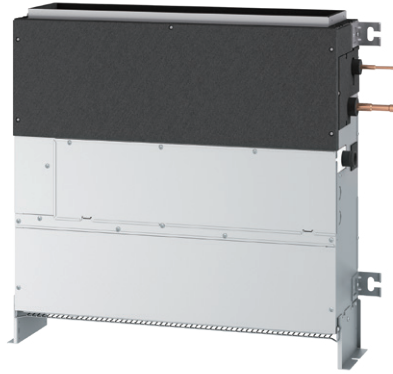


PFFY-P VCM-E

INDOOR UNITS - Floor standing concealed



CITY MULTI

Ideal for...

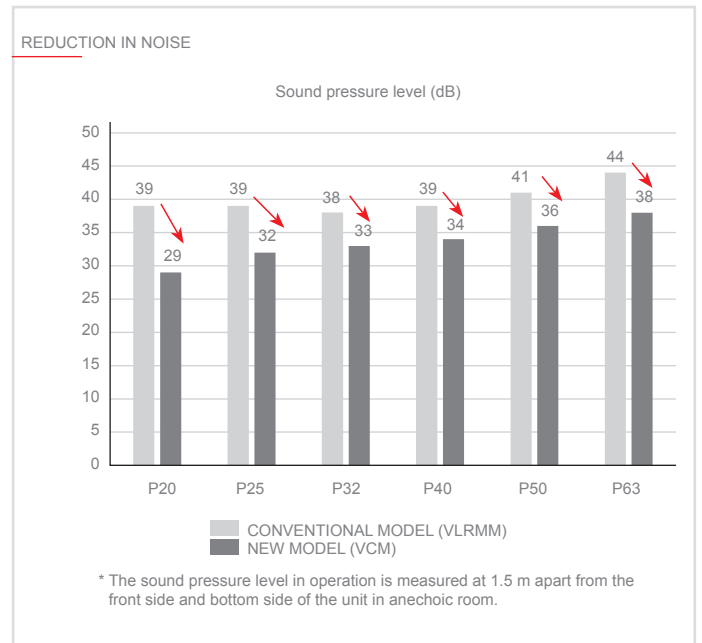
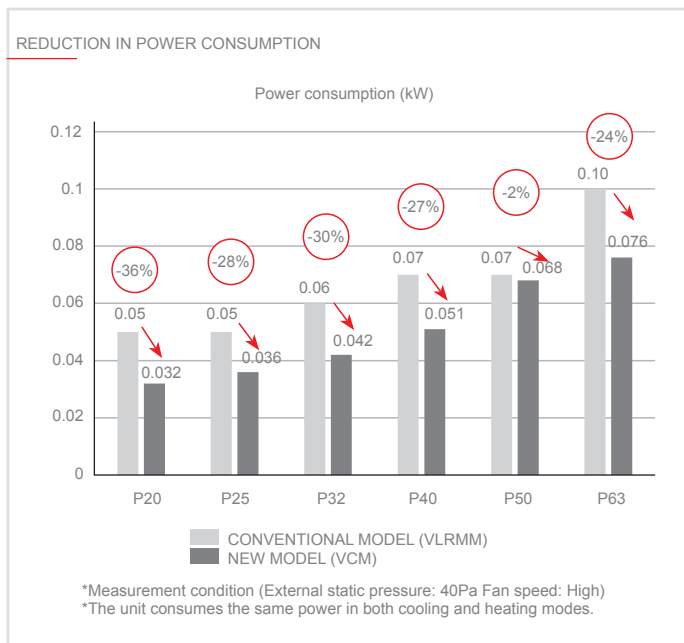
Built-in floor units: simplified installation for effective air conditioning performance.

Flexible air-flow and external static pressure setting

The VCM series may be configured with a choice of four different static external pressure settings: 0, 10, 40 and 60 Pa. Besides airflow rate can be selected from 3 patterns (Low-Mid-High).

Reduced power consumption and noise

New structure realizes smoother airflow to reduce pressure loss in air pathway. The combination of an improved air pathway structure and components contributes to reduce power consumption and operation noise.



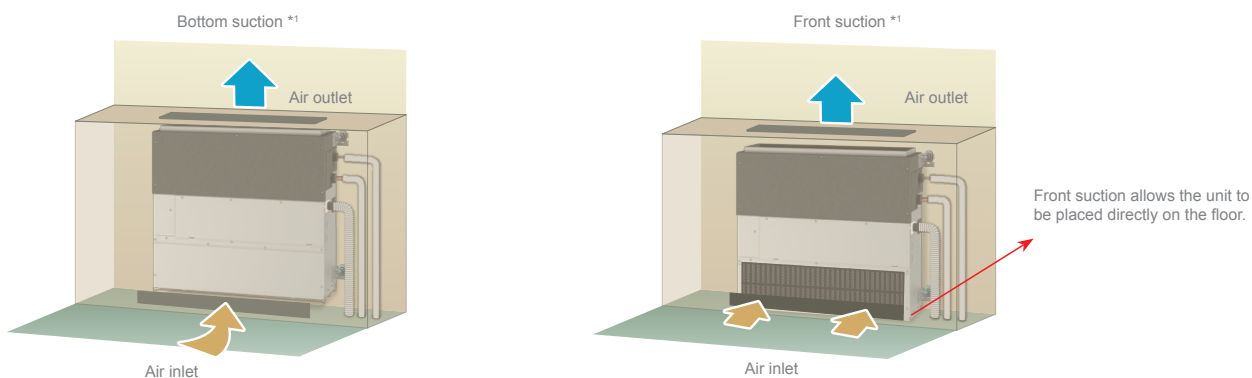


Key Technologies VCM

FLEXIBLE INSTALLATION

Selectable air inlet pattern

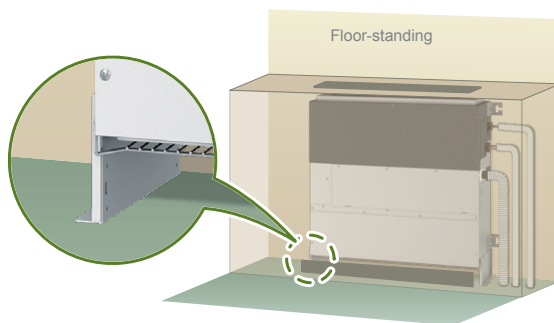
It is selectable bottom suction or front suction by changing panel, fan guard and filter.



*1 Select a site where the flow of supply and air is not blocked. This unit cannot be placed directly on the floor with bottom suction.
 *2 Unit with front suction makes noise than that with bottom suction. It is recommended that the bottom suction to be selected when installing the units in rooms that should be quiet, such as bedrooms.

Floor-standing with legs

The unit can be placed on the floor with the supplied legs.



*Height of unit (with legs) is 690 mm.

Technical specifications

MODEL		PFFY-P20VCM-E	PFFY-P25VCM-E	PFFY-P32VCM-E	PFFY-P40VCM-E	PFFY-P50VCM-E	PFFY-P63VCM-E	
Power		A single-phase, 220-240V, 50Hz / a single-phase, 208-230V, 60Hz						
Capacity in cooling mode*1	kW	2.2	2.8	3.6	4.5	5.6	7.1	
	Btu/h	7,500	9,600	12,300	15,400	19,100	24,200	
Capacity in heating mode*1	kW	2.5	3.2	4.0	5.0	6.3	8.0	
	Btu/h	8,500	10,900	13,600	17,100	21,500	27,300	
Power consumption*2	Cooling kW	0.022	0.026	0.031	0.038	0.052	0.058	
	Heating kW	0.022	0.026	0.031	0.038	0.052	0.058	
Current*2	Cooling A	0.25	0.30	0.34	0.38	0.50	0.49	
	Heating A	0.25	0.30	0.34	0.38	0.50	0.49	
External finish		Galvanized steel plate						
Dimensions HxLxW*3	mm	615(690)x700x200	615(690)x700x200	615(690)x700x200	615(690)x900x200	615(690)x900x200	615(690)x1,100x200	
Net weight	kg	18	18	18.5	22.5	22.5	25.5	
Heat exchanger		Cross fin (aluminium fin and copper piping)						
Fan	Type x Quantity	Sirocco x 2	Sirocco x 2	Sirocco x 2	Sirocco x 3	Sirocco x 3	Sirocco x 4	
	Air flow	(Low-Mid-High)						
		m ³ /min	5.5-6.0-7.0	5.5-6.5-8.0	5.5-7.0-8.5	8.0-9.5-11.0	10.0-11.5-13.5	12.0-14.0-16.5
		l/s	83-100-117	92-108-133	92-117-142	133-158-183	167-192-225	200-233-275
cfm	177-212-247	194-230-282	194-247-300	282-335-388	353-406-477	424-494-583		
Static external pres.	Pa	<0> - 10 - <40> - <60>	<0> - 10 - <40> - <60>	<0> - 10 - <40> - <60>	<0> - 10 - <40> - <60>	<0> - 10 - <40> - <60>	<0> - 10 - <40> - <60>	
Motor	Type	DC motor						
	Power output kW	0.096	0.096	0.096	0.096	0.096	0.096	
Air filter		Polypropylene honeycomb fabric (washable)						
Refrigerant pipe diameter	Gas (brazed) mm	ø12.7	ø12.7	ø12.7	ø12.7	ø12.7	ø15.88	
	Liquid (brazed) mm	ø6.35	ø6.35	ø6.35	ø6.35	ø6.35	ø9.52	
Field drainpipe diameter		O.D. 32 (1-1/4)						
Sound pressure*2	dB(A)	21-23-26	22-25-29	23-26-30	25-27-30	28-31-34	28-32-35	

*1 For heating/cooling capacity, the maximum value with the unit operating in the following conditions is given.

Cooling: indoor 27°C (81°F) DB/19°C (66°F) WB, outdoor 35°C (95°F) DB. Heating: indoor 20°C (68°F) DB, outdoor 7°C (45°F) DB/6°C (43°F) WB.

*2 The values are measured at the factory setting of external static pressure (10 Pa).

*3 The values in () show the height of unit with leg.