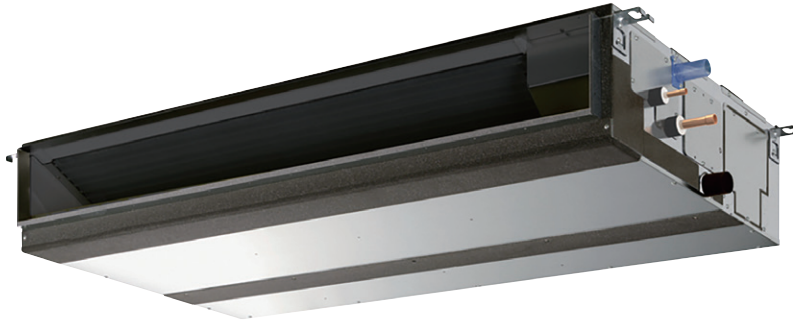


PEFY-M VMA-A

INDOOR UNITS - Ceiling concealed medium to high static pressure



CITY MULTI

Ideal for...

Featuring very precise ambient temperature control, the VMA series ducted unit offers **unparalleled energy efficiency**.

Static pressure

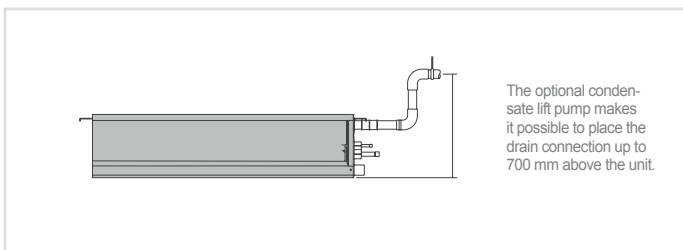
Static external pressure is adjustable to suit the system configuration and installation conditions. The static pressure may be modified to cater for all types of ducting and to allow for functional upgrades such as installing high performance filters, etc. To cater for different layouts and configurations, the static pressure is adjustable within a range from 35Pa to 150 Pa.

Compact unit

The entire VMA series offers extraordinarily compact dimensions: measuring just 250 mm in height, this is the perfect solution for installation in cramped spaces.

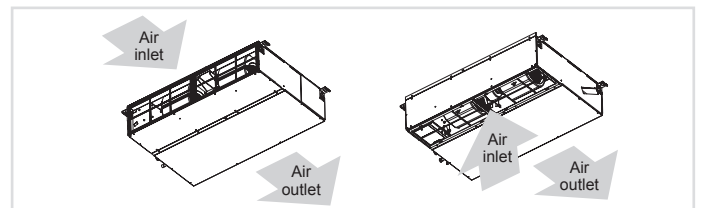
Condensate lift pump

The VMA is equipped with a condensate lift pump.



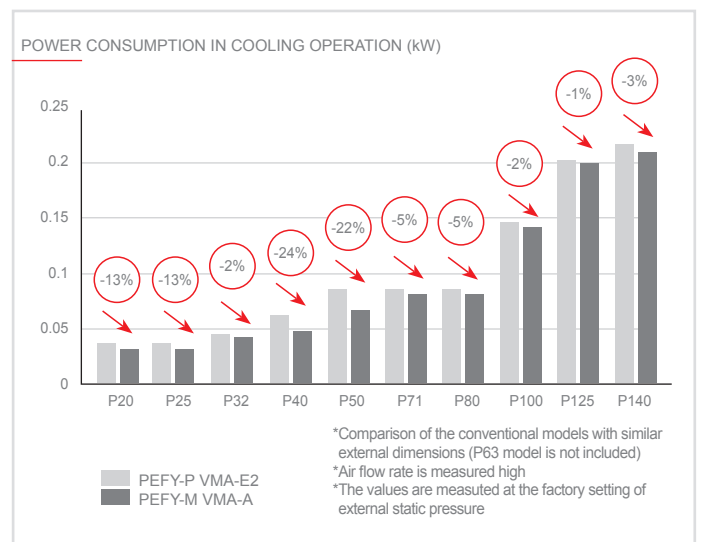
Air inlet direction can easily be changed

By only switching the closing board and air filter, the inlet layout can be altered from the rear inlet. (At the time of factory shipment: rear inlet)



Less power consumption

Improved air pathway inside the fan casing provides smooth air flow for more efficient operation. Additionally, the new higher-efficiency motor reduces energy consumption.





Key Technologies

Technical specifications

MODEL			PEFY-M20VMA-A	PEFY-M25VMA-A	PEFY-M32VMA-A	PEFY-M40VMA-A	
Power	1-phase 220-230-240 V 50 Hz						
Capacity in cooling mode *1	kW	2.2	2.8	3.6	4.5		
	Btu/h	7,500	9,600	12,300	15,400		
Capacity in heating mode*1	kW	2.5	3.2	4.0	5.0		
	Btu/h	8,500	10,900	13,600	17,100		
Power consumption	Cooling kW	0.032	0.032	0.044	0.047		
	Heating kW	0.030	0.030	0.042	0.045		
Current	Cooling A	0.25	0.25	0.34	0.37		
	Heating A	0.25	0.25	0.34	0.37		
External finish	Galvanized steel plate						
Dimensions HxLxW	mm	250 x 700 x 732	250 x 700 x 732	250 x 700 x 732	250 x 900 x 732		
Net weight	kg	21	21	21	25		
Heat exchanger	Cross fin (Aluminum fin and copper tube)						
Fan	Type x Quantity	Sirocco x 1		Sirocco x 1		Sirocco x 2	
	Air flow (low-medium-high)	m³/min	6.0 - 7.5 - 8.5	6.0 - 7.5 - 8.5	7.5 - 9.0 - 10.5	10.0 - 12.0 - 14.0	
		l/s	100 - 125 - 142	100 - 125 - 142	125 - 150 - 175	167 - 200 - 233	
		cfm	212 - 265 - 300	212 - 265 - 300	265 - 318 - 371	353 - 424 - 494	
External static press *2	Pa	35 - <50> - <70> - <100> - <150>	35 - <50> - <70> - <100> - <150>	35 - <50> - <70> - <100> - <150>	35 - <50> - <70> - <100> - <150>		
Motor	Type	DC Motor					
	Power output kW	0.085	0.085	0.085	0.121		
Air filter	Polypropylene honeycomb fabric (washable)						
Refrigerant pipe diameter	Gas (brazed) mm	12.7	12.7	12.7	12.7		
	Liquid (brazed) mm	6.35	6.35	6.35	6.35		
Local drain pipe diameter	O.D.32 (1-1/4")						
Sound pressure (low-medium-high)*3	dB(A)	21 - 25 - 27	21 - 25 - 27	23 - 27 - 30	23 - 28 - 31		

*1 For heating/cooling capacity, the maximum value with the unit operating in the following conditions is given.
 Cooling: indoor 27°C (81°F) DB/19°C (66°F) WB, outdoor 35°C (95°F) DB. Heating: indoor 20°C (68°F) DB, outdoor 7°C (45°F) DB/6°C (43°F) WB.
 *2 The factory setting of airflow mode and external static pressure mode is shown without < > .
 *3 Measured in anechoic chamber with 230V mains power and at the factory setting of external static pressure.

Technical specifications

MODEL			PEFY-M50VMA-A	PEFY-M63VMA-A	PEFY-M71VMA-A	PEFY-M80VMA-A
Power	1-phase 220-230-240 V 50 Hz					
Capacity in cooling mode *1	kW		5.6	7.1	8.0	9.0
	Btu/h		19,100	24,200	27,300	30,700
Capacity in heating mode*1	kW		6.3	8.0	9.0	10.0
	Btu/h		21,500	27,300	30,700	34,100
Power consumption	Cooling	kW	0.066	0.087	0.080	0.080
	Heating	kW	0.064	0.085	0.078	0.078
Current	Cooling	A	0.51	0.66	0.57	0.57
	Heating	A	0.51	0.66	0.57	0.57
External finish	Galvanized steel plate					
Dimensions HxLxW	mm		250 x 900 x 732	250 x 900 x 732	250 x 1,100 x 732	250 x 1,100 x 732
Net weight	kg		25	27	30	30
Heat exchanger	Cross fin (Aluminum fin and copper tube)					
Fan	Type x Quantity		Sirocco x 2	Sirocco x 2	Sirocco x 2	Sirocco x 2
	Air flow (low-medium-high)	m ³ /min	12.0 - 14.5 - 17.0	13.5 - 16.0 - 19.0	14.5 - 18.0 - 21.0	14.5 - 18.0 - 21.0
		l/s	200 - 242 - 283	225 - 267 - 317	242 - 300 - 350	242 - 300 - 350
		cfm	424 - 512 - 600	477 - 565 - 671	512 - 636 - 742	512 - 636 - 742
External static press ²	Pa	35 - <50> - <70> - <100> - <150>	35 - <50> - <70> - <100> - <150>	40 - <50> - <70> - <100> - <150>	40 - <50> - <70> - <100> - <150>	
Motor	Type		DC Motor			
	Power output	kW	0.121	0.121	0.121	0.121
Air filter	Polypropylene honeycomb fabric (washable)					
Refrigerant pipe diameter	Gas (brazed)	mm	12.7	15.88	15.88	15.88
	Liquid (brazed)	mm	6.35	9.52	9.52	9.52
Local drain pipe diameter	O.D.32 (1-1/4")					
Sound pressure (low-medium-high)*3	dB(A)		24 - 31 - 34	27 - 31 - 35	25 - 31 - 34	25 - 31 - 34

*1 For heating/cooling capacity, the maximum value with the unit operating in the following conditions is given.

Cooling: indoor 27°C (81°F) DB/19°C (66°F) WB, outdoor 35°C (95°F) DB. Heating: indoor 20°C (68°F) DB, outdoor 7°C (45°F) DB/6°C (43°F) WB.

*2 The factory setting of airflow mode and external static pressure mode is shown without < >.

*3 Measured in anechoic chamber with 230V mains power

Technical specifications

MODEL			PEFY-M100VMA-A	PEFY-M125VMA-A	PEFY-M140VMA-A
Power	1-phase 220-230-240 V 50 Hz				
Capacity in cooling mode *1	kW		11.2	14.0	16.0
	Btu/h		38,200	47,800	54,600
Capacity in heating mode*1	kW		12.5	16.0	18.0
	Btu/h		42,700	54,600	61,400
Power consumption	Cooling	kW	0.142	0.199	0.208
	Heating	kW	0.140	0.197	0.206
Current	Cooling	A	0.97	1.23	1.34
	Heating	A	0.97	1.23	1.34
External finish	Galvanized steel plate				
Dimensions HxLxW	mm		250 x 1,400 x 732	250 x 1,400 x 732	250 x 1,600 x 732
Net weight	kg		37	38	42
Heat exchanger	Cross fin (Aluminum fin and copper tube)				
Fan	Type x Quantity		Sirocco x 3	Sirocco x 3	Sirocco x 3
	Air flow (low-medium-high)	m ³ /min	23.0 - 28.0 - 32.0	28.0 - 34.0 - 37.0	29.5 - 35.5 - 40.0
		l/s	383 - 467 - 533	467 - 567 - 617	492 - 592 - 667
		cfm	812 - 989 - 1,130	989 - 1,201 - 1,306	1,042 - 1,254 - 1,412
External static press ²	Pa	40 - <50> - <70> - <100> - <150>	40 - <50> - <70> - <100> - <150>	40 - <50> - <70> - <100> - <150>	
Motor	Type		DC Motor		
	Power output	kW	0.300	0.300	0.300
Air filter	Polypropylene honeycomb fabric (washable)				
Refrigerant pipe diameter	Gas (swaged)	mm	15.88	15.88	15.88
	Liquid (swaged)	mm	9.52	9.52	9.52
Local drain pipe diameter	O.D.32 (1-1/4")				
Sound pressure (low-medium-high)*3	dB(A)		30 - 35 - 38	34 - 38 - 40	33 - 37 - 40

*1 For heating/cooling capacity, the maximum value with the unit operating in the following conditions is given.

Cooling: indoor 27°C (81°F) DB/19°C (66°F) WB, outdoor 35°C (95°F) DB. Heating: indoor 20°C (68°F) DB, outdoor 7°C (45°F) DB/6°C (43°F) WB.

*2 The factory setting of airflow mode and external static pressure mode is shown without < >.

*3 Measured in anechoic chamber with 230V mains power