

# Indoor Units

## Specification-R32 Wall Mounted J Type



Model	Indoor unit		AMWM-H07/4R3(J*)	AMWM-H09/4R3(J*)	AMWM-H12/4R3(J*)
Capacity	Cooling/Heating	Btu/h	7165(3855-9220)/7510(3340-8530)	9000(4780-11260)/9215(4095-10240)	12285(5800-12625)/12625(5120-12625)
		kW	2.05(1.13-2.70)/2.15(0.98-2.50)	2.58(1.40-3.30)/2.70(1.20-3.00)	3.50(1.70-3.70)/3.50(1.50-3.70)
Electric Data	Power Supply	V~,Hz,Ph	220-240,50,1	220-240,50,1	220-240,50,1
		Cooling/Heating Power Input W	40(12-68)/40(12-68)	40(12-68)/40(12-68)	40(12-68)/40(12-68)
Performance	Air Flow Volume	m <sup>3</sup> /h	600	600	600
	Sound Pressure Noise Level	dB(A)	40/38/34	40/38/34	42/40/37
	Sound Power Noise Level	dB(A)	51	54	52
Dimension (WxDxH)	Net	mm	792×292×201	792×292×201	792×292×201
		Packing	mm	888×370×290	888×370×290
Weight	Net/Gross	kg	8/10	8/10	8.5/10.5
		Liquid Side	mm(inch)	6.35(1/4)	6.35(1/4)
Piping size	Gas Side	mm(inch)	9.52(3/8)	9.52(3/8)	9.52(3/8)
		mm(inch)	16.5	16.5	16.5
		Drainage	mm(inch)	16.5	16.5
Stuffing Quantity	20/40/40H	unit	304/640/720	304/640/720	304/640/720

Model	Indoor unit		AMWM-H18/4R3(J*)	AMWM-H24/4R3(J*)
Capacity	Cooling/Heating	Btu/h	17747(8530-19790)/18085(7680-19790)	23986(9895-24908)/24054(7165-27296)
		kW	5.27(2.50-5.80)/5.37(2.25-5.80)	7.03(2.90-7.30)/7.05(2.10-8.00)
Electric Data	Power Supply	V~,Hz,Ph	220-240,50,1	220-240,50,1
		Cooling/Heating Power Input W	63(16-88)/63(16-88)	63(16-88)/63(16-88)
Performance	Air Flow Volume	m <sup>3</sup> /h	850	1150
	Sound Pressure Noise Level	dB(A)	45/42/37	49/43/37
	Sound Power Noise Level	dB(A)	55	59
Dimension (WxDxH)	Net	mm	940×316×224	1132×330×232
		Packing	mm	1010×385×310
Weight	Net/Gross	kg	12/14	14/17
		Liquid Side	mm(inch)	6.35(1/4)
Piping size	Gas Side	mm(inch)	12.7(1/2)	15.88(5/8)
		mm(inch)	16.5	16.5
		Drainage	mm(inch)	16.5
Stuffing Quantity	20/40/40H	unit	238/490/560	154/336/384



## Specification-R32 Wall Mounted F Type

Model	Indoor unit		AMWM-H07/4R3(F*)	AMWM-H09/4R3(F*)	AMWM-H12/4R3(F*)
Capacity	Cooling/Heating	Btu/h	7165(3855-9220)/7510(3340-8530)	9000(4780-11260)/9215(4095-10240)	12285(5800-12625)/12625(5120-12625)
		kW	2.05(1.13-2.70)/2.15(0.98-2.50)	2.58(1.40-3.30)/2.70(1.20-3.00)	3.50(1.70-3.70)/3.50(1.50-3.70)
Electric Data	Power Supply	V~,Hz,Ph	220-240,50,1	220-240,50,1	220-240,50,1
		Cooling/Heating Power Input W	40(12-68)/40(12-68)	40(12-68)/40(12-68)	40(12-68)/40(12-68)
Performance	Air Flow Volume	m <sup>3</sup> /h	600/480/370	600/480/370	600/480/370
	Sound Pressure Noise Level	dB(A)	40/38/34	40/38/34	42/40/36
	Sound Power Noise Level	dB(A)	51	54	52
Dimension (WxDxH)	Net	mm	750×285×200	750×285×200	750×285×200
		Packing	mm	820×347×277	820×347×277
Weight	Net/Gross	kg	7.5/9	7.5/9	8/10
		Liquid Side	mm(inch)	6.35(1/4)	6.35(1/4)
Piping size	Gas Side	mm(inch)	9.52(3/8)	9.52(3/8)	9.52(3/8)
		mm(inch)	16.5	16.5	16.5
		Drainage	mm(inch)	16.5	16.5
Stuffing Quantity	20/40/40H	unit	384/768/864	384/768/864	384/768/864



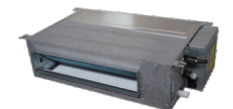
## Specification-R32 Wall Mounted F Type

Model	Indoor unit		AMWM-H18/4R3(F*)	AMWM-H24/4R3(F*)
Capacity	Cooling/Heating	Btu/h	17747(8530-19790)/18085(7680-19790)	23986(9895-24908)/24054(7165-27296)
		kW	5.27(2.50-5.80)/5.37(2.25-5.80)	7.03(2.90-7.30)/7.05(2.10-8.00)
Electric Data	Power Supply	V~,Hz,Ph	220-240,50,1	220-240,50,1
		Cooling/Heating Power Input W	63(16-88)/63(16-88)	63(16-88)/63(16-88)
Performance	Air Flow Volume	m <sup>3</sup> /h	850/800/680	1150/950/750
	Sound Pressure Noise Level	dB(A)	45/42/35	49/42/35
	Sound Power Noise Level	dB(A)	57	60
Dimension (WxDxH)	Net	mm	900×310×225	1082×330×233
		Packing	mm	970×382×302
Weight	Net/Gross	kg	12/14	15/16.5
		Liquid Side	mm(inch)	6.35(1/4)
Piping size	Gas Side	mm(inch)	12.7(1/2)	15.88(5/8)
		mm(inch)	16.5	16.5
		Drainage	mm(inch)	16.5
Stuffing Quantity	20/40/40H	unit	252/518/592	203/427/488



## Specification-R32 Cassette

Model	Indoor unit		AMCA-H09/4R3AA	AMCA-H12/4R3AA	AMCA-H18/4R3AA	AMCA-H24/4R3B	
Capacity	Cooling/Heating	Btu/h	9560(5120-12115)/10240(5460-13000)	12285(6800-12625)/13306(6930-15080)	17060(8530-19107)/19107(10340-24000)	24000(7400-28000)/27300(6800-31700)	
		kW	2.80(1.50-3.55)/3.00(1.60-3.81)	3.60(1.70-3.70)/3.9(2.03-4.42)	5.0(2.50-5.6)/5.6(3.03-7.03)	7.00(2.16-8.20)/8.00(1.98-9.30)	
Electric Data	Power Supply	V~,Hz,Ph	220-240,50,1	220-240,50,1	220-240,50,1	220-240,50,1	
		Cooling/Heating Power Input W	70(17.5-109)/70(17.5-109)	70(17.5-109)/70(17.5-109)	70(17.5-109)/70(17.5-109)	110(27.5-171)/110(27.5-171)	
Performance	Air Flow Volume	m <sup>3</sup> /h	700/600/530	700/600/530	700/600/530	1400/1350/1150	
	Sound Pressure Noise Level	dB(A)	45/41/35	45/41/35	45/41/35	47/45/42	
	Sound Power Noise Level	dB(A)	56	56	56	57	
Dimension (WxDxH)	Net(Body)	mm	570×570×260	570×570×260	570×570×260	840×840×246	
		Packing(Body)	mm	655×655×295	655×655×295	655×655×295	910×910×310
		Net(Panel)	mm	650×650×55	650×650×55	650×650×55	950×950×55
		Packing(Panel)	mm	710×710×80	710×710×80	710×710×80	1000×1000×100
Weight	Net/Gross(Body)	kg	18/21	18/21	18/21	26/30	
		Net/Gross(Panel)	kg	2.2/3.7	2.2/3.7	2.2/3.7	5.3/7.8
Piping size	Liquid Side	mm(inch)	6.35(1/4)	6.35(1/4)	6.35(1/4)	6.35(1/4)	
		Gas Side	mm(inch)	12.7(1/2)	12.7(1/2)	12.7(1/2)	15.88(3/8)
		Drainage	mm(inch)	20	20	20	20
Stuffing Quantity	20/40/40H	unit	168/361/414	168/361/414	168/361/414	82/180/206	



## Specification-R32 Y Type Slim Duct

Model	Indoor unit		AMSD-H07/4R3AA	AMSD-H09/4R3AA	AMSD-H12/4R3AA	AMSD-H18/4R3AA	AMSD-H24/4R3AA
Capacity	Cooling/Heating	Btu/h	7506(3855-9220)/8530(4575-10820)	8872(5120-12115)/9895(6800-12450)	12280(5835-13135)/13650(6480-13375)	17400(8530-19790)/19790(9690-21835)	24225(11846-25436)/25590(12513-26868)
		kW	2.20(1.13-2.70)/2.50(1.34-3.17)	2.60(1.50-3.55)/2.9(1.70-3.65)	3.60(1.71-3.85)/4.0(1.90-3.92)	5.10(2.50-5.80)/5.82(2.84-6.40)	7.10(3.47-7.55)/7.50(3.67-7.88)
Electric Data	Power Supply	V~,Hz,Ph	220-240,50,1	220-240,50,1	220-240,50,1	220-240,50,1	220-240,50,1
		Cooling/Heating Power Input W	55/55	55/55	55/55	75/75	90/90
Performance	Air Flow Volume	m <sup>3</sup> /h	600/450/380	600/450/380	680/560/450	860/660/600	1150/880/780
	Sound Pressure Noise Level	dB(A)	37/33/30	37/33/30	38/34/31	39/35/33	41/38/36
	Sound Power Noise Level	dB(A)	53	53	53	55	55
Dimension (WxDxH)	Net	mm	700×470×200	700×470×200	700×470×200	1000×470×200	1000×470×200
		Packing	mm	1005×580×275	1005×580×275	1005×580×275	1305×580×275
Weight	Net/Gross	kg	18.5/22	18.5/22	18.5/22	24/28	29/33
		Liquid Side	mm(inch)	6.35(1/4)	6.35(1/4)	6.35(1/4)	6.35(1/4)
Piping size	Gas Side	mm(inch)	9.52(1/2)	9.52(1/2)	9.52(1/2)	12.7(1/2)	12.7(1/2)
		mm(inch)	16.5	16.5	16.5	16.5	16.5
		Drainage	mm(inch)	16.5	16.5	16.5	16.5
Stuffing Quantity	20/40/40H	unit	176/368/414	176/368/414	176/368/414	136/288/324	104/232/260

★ Remark: The above designs and specifications are subject to change without prior notice. Final specifications please refer to technical specification provided by sales representative.

★ Remark: The above designs and specifications are subject to change without prior notice. Final specifications please refer to technical specification provided by sales representative.